



Cherokee Bluff Band Association Parents Meeting

NOVEMBER 12, 2019

AGENDA

- WELCOME – BRIANNA
- TREASURERS REPORT – PAM
- MARCHING BAND BY THE NUMBERS
- CBBA ORG STRUCTURE – BRIANNA
- DIRECTORS REPORT – MR. CANTRELL



Treasurer's Report

- P&L and Balance Sheet Overview
- Chicken Fundraiser Update
- Next Fundraisers

Marching Bear Volunteer Metrics

Where does this data come from?

- ▶ Data is pulled from Sign Up Genius and Cuttime
- ▶ All numbers include Color Guard.
- ▶ Data is High School only.
- ▶ Board Members are excluded from these numbers, but not their spouses.
- ▶ Donating items was not measured as many families just donated, not signing up.

Basic Info:

- ▶ Total Marching Bears – 58
- ▶ Total MB Families – 51
 - ▶ Number of Families with Multiple Students – 7 (6=2 students, 1=3 students)

Marching Bear Volunteer Metrics

363 Volunteers needed

Marching Band Events W/ Volunteers YTD - 26

- ▶ 9 Days of Band Camp, Total Slots – 65 (Week1= 10% Not filled, Week 2= 9% not filled)
- ▶ 1 Prop Build Day - 5
- ▶ 1 Bluff Day – 5
- ▶ 7 Home Games (inc. scrimmage) – Total Slots - 196
- ▶ 4 Away Games - 40 Slots (We had the same 4 parents fill 6 of these slots every away game)
- ▶ 3 Exhibitions / Competitions – Total Slots - 30
- ▶ Fall Concert – Total Slots – 14 (21% not filled)
- ▶ 1 Cookie Dough Fundraiser – Total Slots 4
- ▶ Chicken Fundraiser – Total Slots 4

* Board Members do not sign up for a slot, but work events

Marching Bear Volunteer Metrics

- ▶ Number of Families with 2 or more volunteers – 17
- ▶ We have 4 families with more than 2 volunteers (relatives, siblings, friends)
- ▶ Number of families who have not volunteered so far this school year – 13 (26%)

Marching Bear Volunteer Metrics

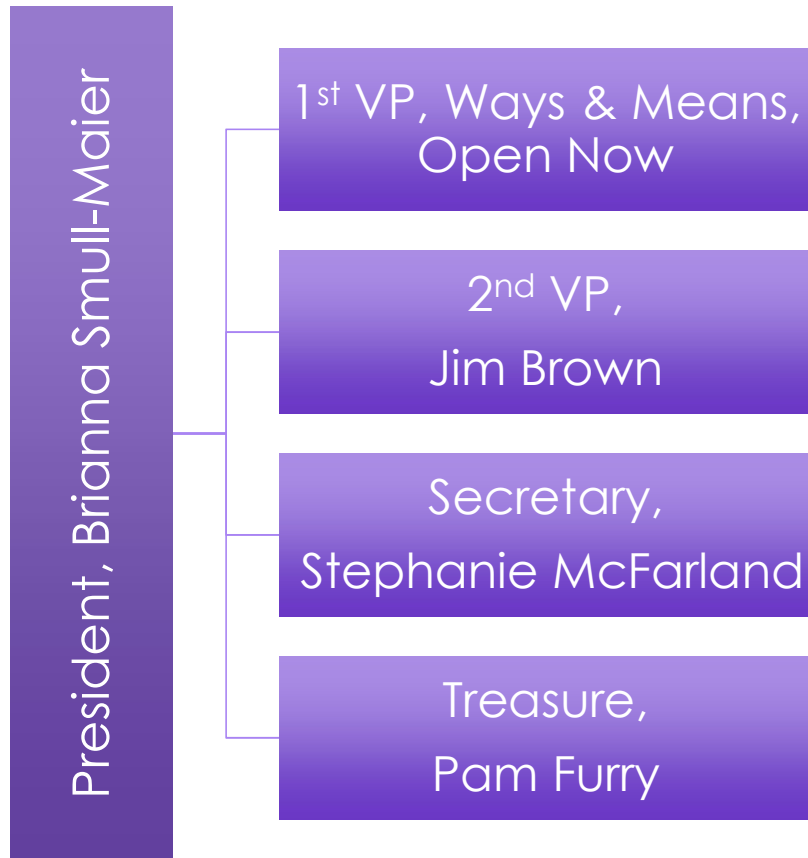
- ▶ If 100% of families volunteered, All families would have to volunteer 7-8 times
- ▶ If we stay at 65% of families volunteer, then each family would have to volunteer 11-12 times
- ▶ We have 2 volunteers who have volunteered 26 times each
- ▶ 65% of people volunteered more than 5 times.
- ▶ Of the families that volunteered, about 5 volunteered 1 time.



Review of the CBBA Org Structure

SINCE WE ARE A NEW ORGANIZATION, THESE ARE ABLE TO BE MOLDED TO FIT OUR NEEDS. YOUR INPUT IS VALUABLE.

Cherokee Bluff Band Board



Executive Board Organization Chart

Open seat 2019-20

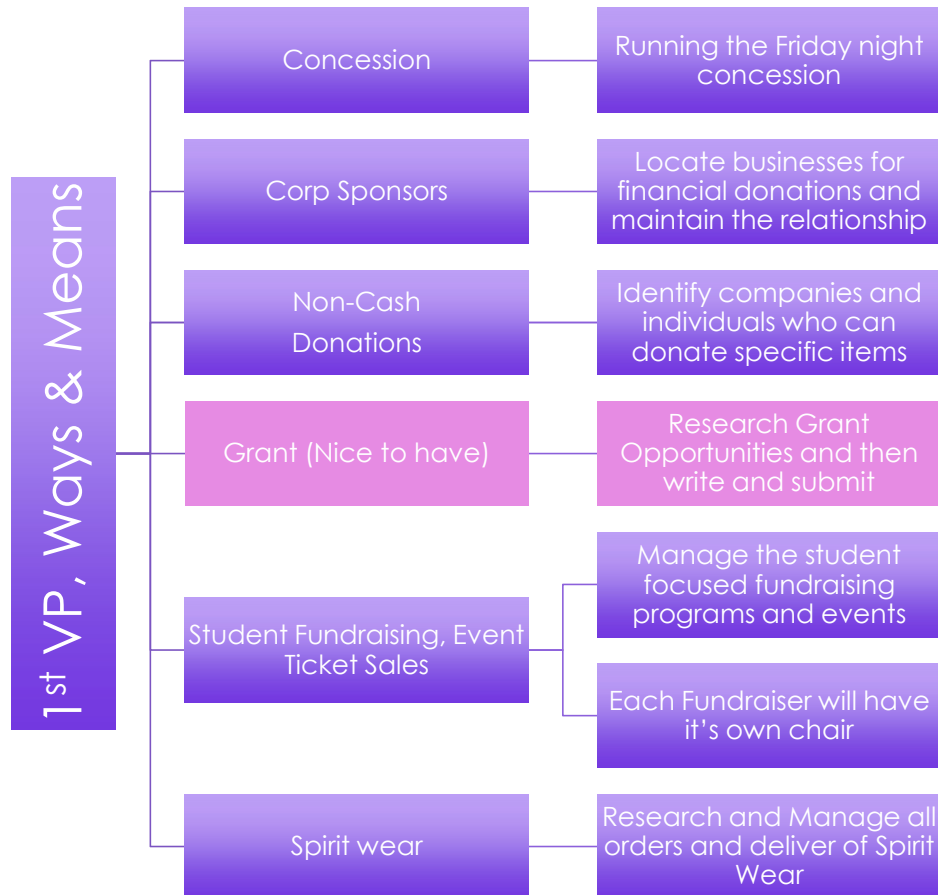
- 1st Vice President, Ways & Means

Open Seats for the 2020-2021 School Year

- President
- 1st Vice President
- 2nd Vice President

* Secretary and Treasurer will serve a 3rd year

Cherokee Bluff Band



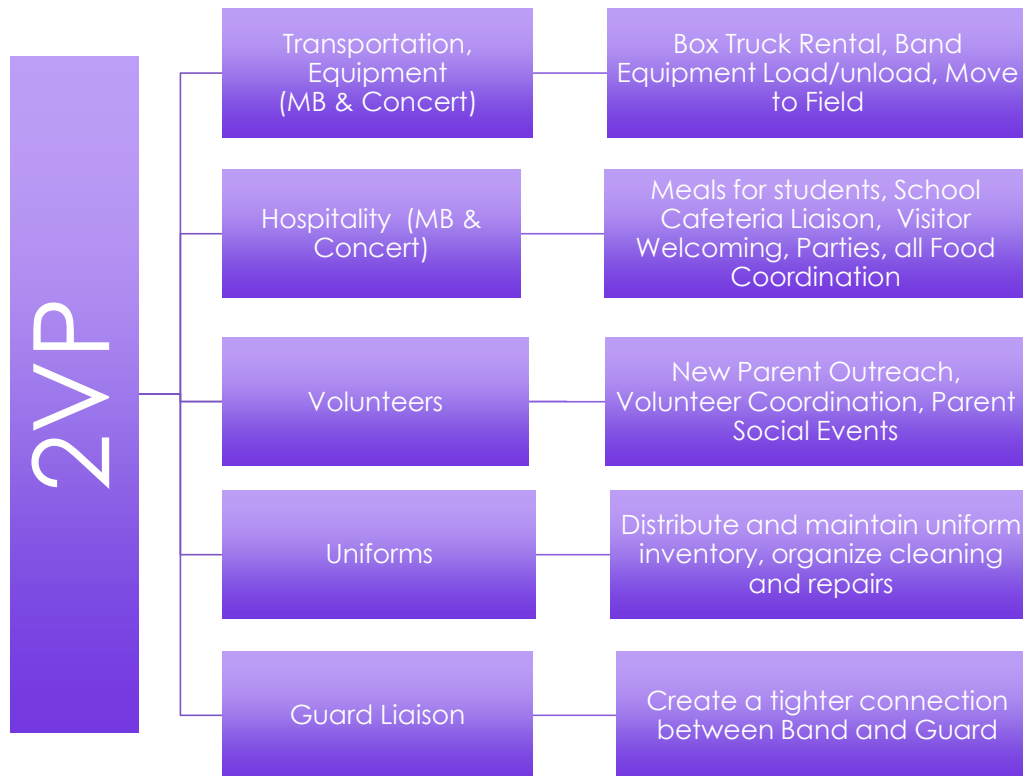
Ways & Means Organization Chart

Open Seats for the 2019-20 School Year

- 1st Vice President. Ways & Means

It is a “nice to have” that each role is headed by a separate chairperson. In our current world, Concession and Spirit have chairs and the other roles are handled ADHOC. That means someone, usually with another role is covering what they can so that balls don’t drop.

Cherokee Bluff Band

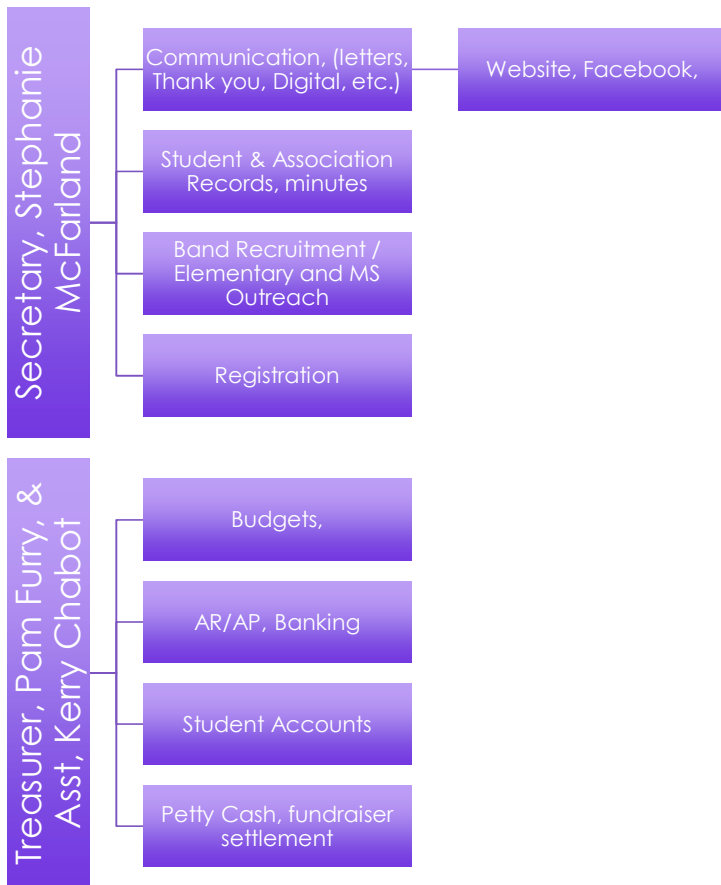


2VP Operations Organization Chart

Open Seats for the 2020-2021 School Year

We currently have a chairperson for each of these roles.

Cherokee Bluff Band



Secretary & Treasurer Organization Chart

Each of these Board positions need additional chair people to help them do their responsibilities

Calendar of Events

Friday, November 15

CB Spirit Day at CMCSI (TBA)

Tuesday, November 19

Winterguard Rehearsal (4pm-6pm)

Thursday, November 21

Winterguard Rehearsal (4pm-6pm)

Thursday, December 5

Love Light Tree Lighting Service

Saturday, December 7

MS District-Level All-State Auditions

Winterguard Saturday Camp (9am-5pm)

Thursday, December 12

HOLIDAY CONCERT

Saturday, December 14

HS District-Level All-State Auditions

SPRING: May 15-16

Carowinds Trip – 7,8 & High School