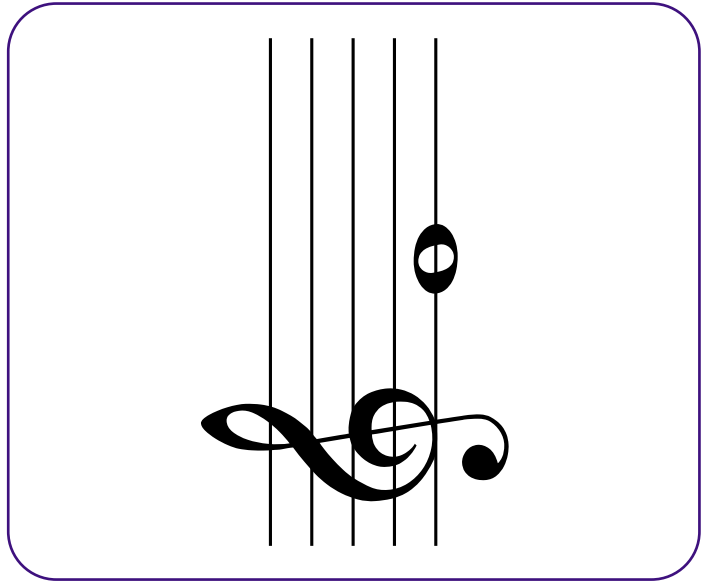
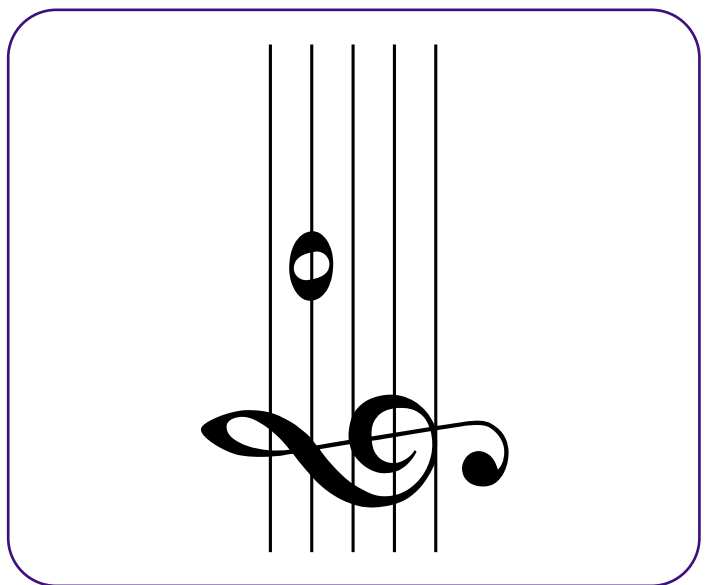
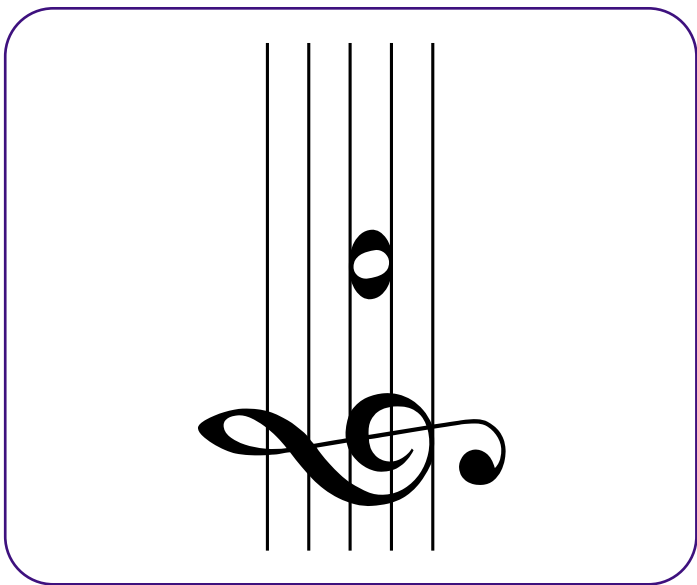
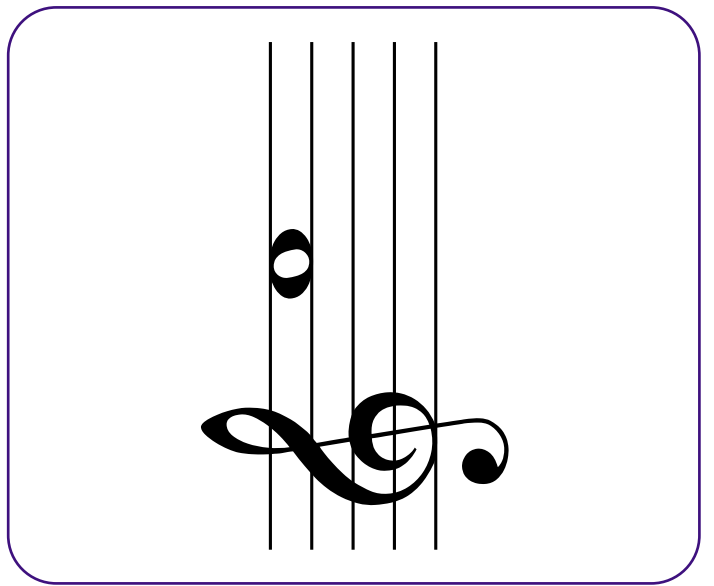
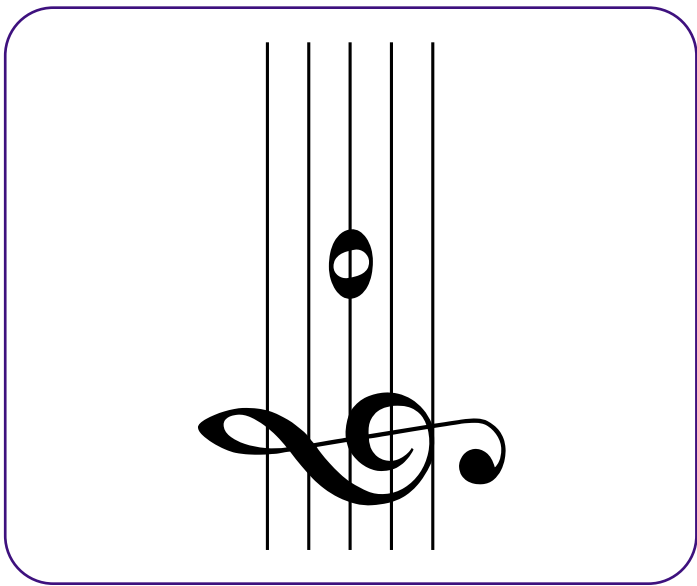
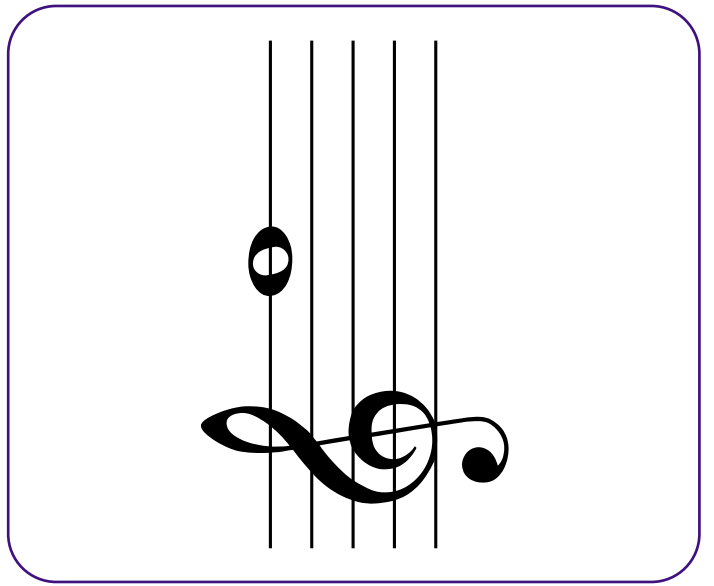
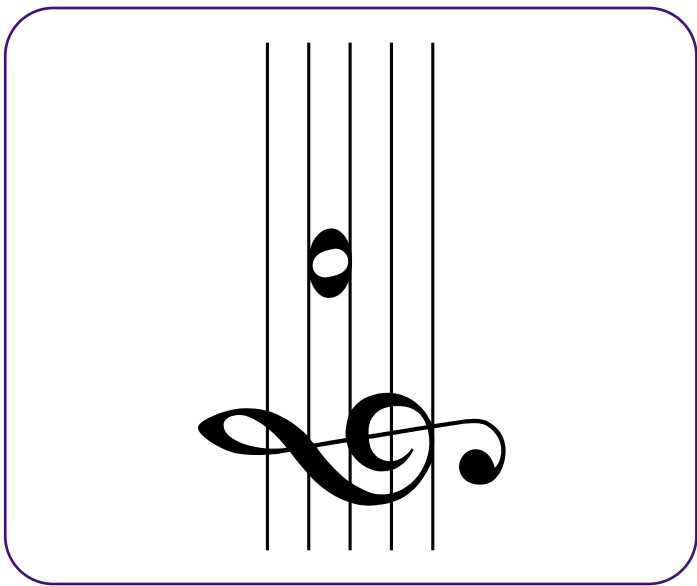


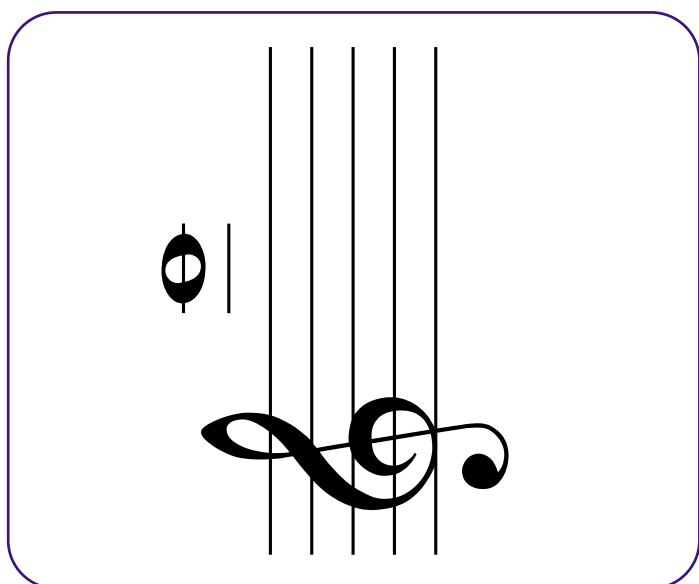
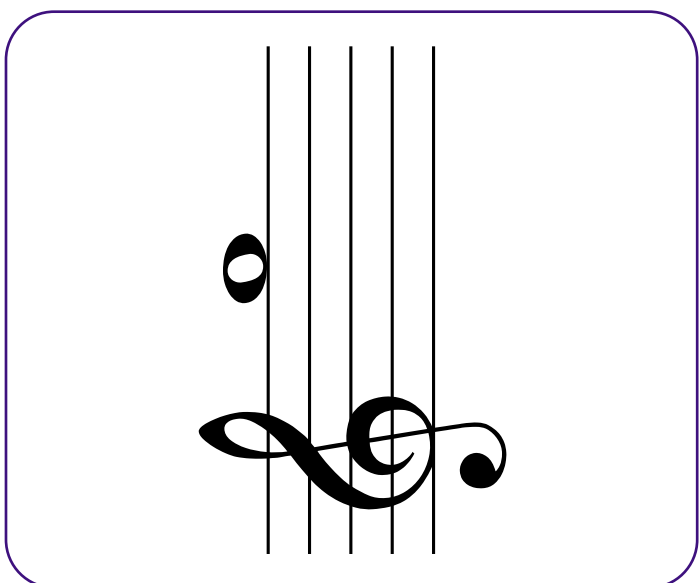
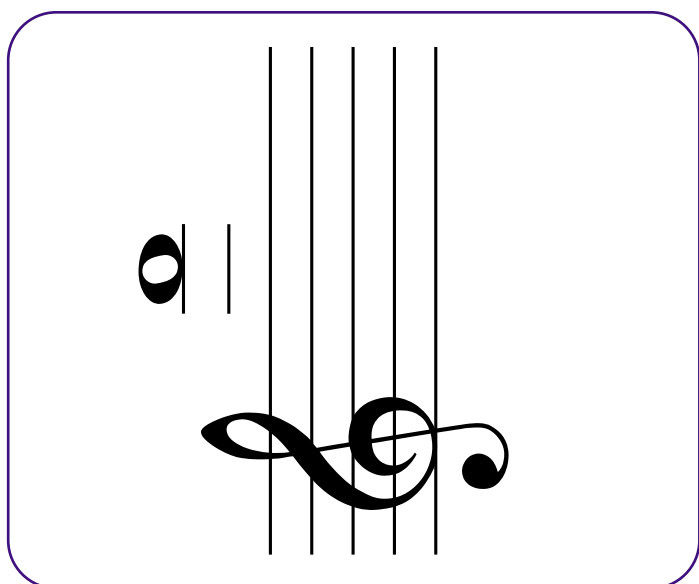
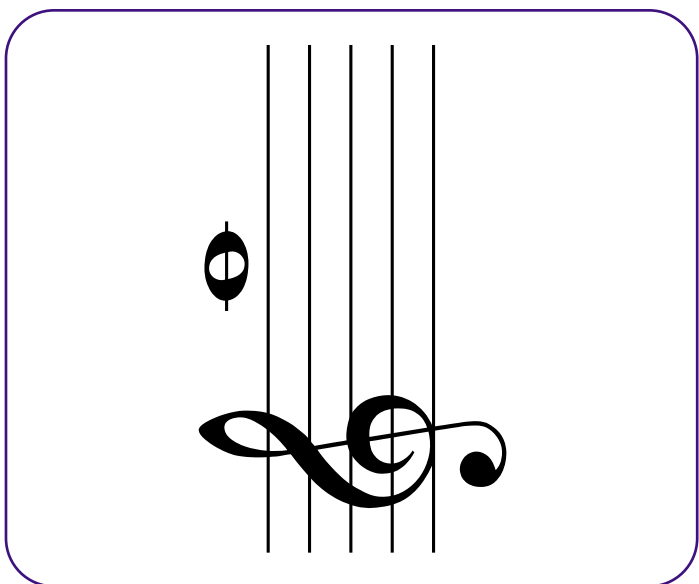
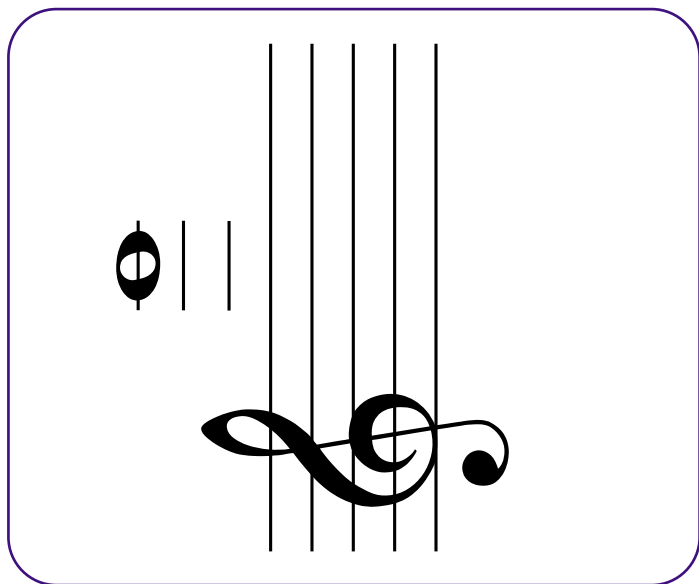
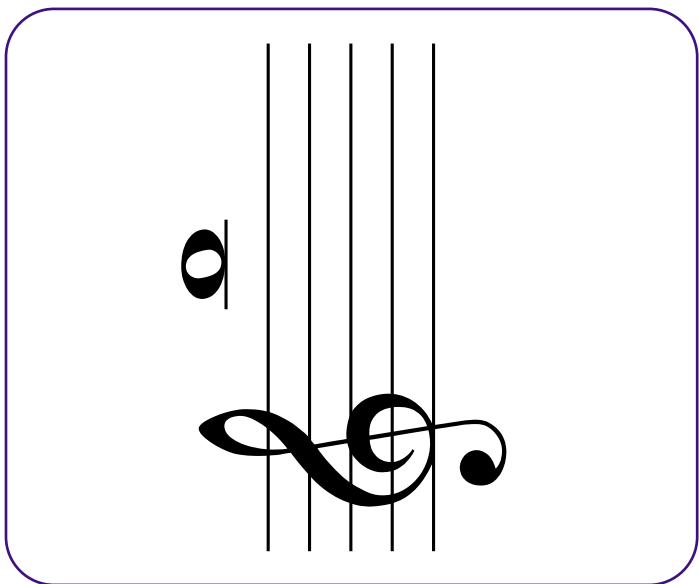
Treble Clef
Flash Cards



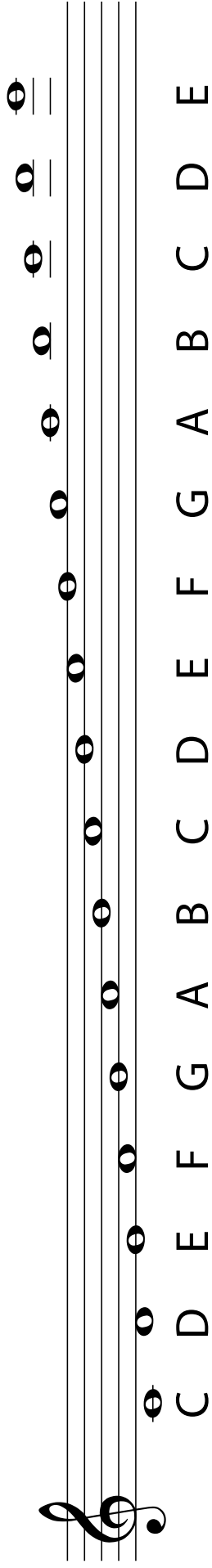
www.makingmusicfun.net







Answer Key



A musical staff with a treble clef and a key signature of one flat (Bb). The staff contains a sequence of 15 quarter notes. Below the staff, the corresponding letter names are written: C, D, E, F, G, A, B, C, D, E, F, G, A, B, C, D, E. The notes are: C (middle C), D (first line), E (first space), F (first flat, second line), G (second space), A (second flat, third line), B (second flat, third space), C (third line), D (third space), E (third flat, fourth line), F (third flat, fourth space), G (fourth space), A (fourth flat, fifth line), B (fourth flat, fifth space), C (fifth line), D (fifth flat, above the staff), E (fifth flat, above the staff).

